

FIBERAPP

SATU MARE - ROMANIA

OPTICAL CONNECTIVITY **AND ACCESSORIES**



SPECIFICATIONS



CONNECTOR TYPE	SC	LC	LC SHORT BOOT	LC ANGLE BOOT
Applicable standard	IEC 61754-4 TIA 604-3	IEC 61754-20 TIA 604-10-A	IEC 61754-20 TIA 604-10-A	IEC 61754-20 TIA 604-10-A
THERMAL/MECHANICAL PERFORMANCE				
Pulling load (N)	100	100	100	100
Mating cycles	1000	1000	1000	1000
Working temperature	from -40C° to +85C°	from -40C° to +85C°	from -40C° to +85C°	from -40C° to +85C°
Materials UL94-V0	✓	✓	n/a	n/a
HOUSING COLOR				
SM PC	Blue	Blue	Blue	Blue
SM APC	Green	Green	Green	Green
MM	Beige	Beige	Beige	Beige
FIBER				
SM-R 9/125	✓	✓	✓	✓
MM 50/125 OM2 - OM3	✓	✓	✓	✓
MM 62,5/125 OM1	✓	✓	✓	✓
AVAILABLE FOR CABLES DIAMETER				
900 µm	✓	✓	✓	✓
1,60 mm	✓	✓	✓	✓
2 mm	✓	✓	✓	✓
3 mm	✓	✓	✓	✓
NOMINAL INSERTION LOSS (dB)				
SM PC (@1310 - 1550nm)			0,20	
SM APC (@1310 - 1550nm)			0,15	
MM (@850 - 1300nm)			0,25	
NOMINAL RETURN LOSS (dB)				
SM PC (@1310 - 1550nm)			≥ 50	
SM APC (@1310 - 1550nm)			≥ 65	
MM (@850 - 1300nm)			≥ 20	

SPECIFICATIONS



CONNECTOR TYPE	FC	ST	E2000	MU
Applicable standard	IEC 61754-13 TIA 604-4-A	IEC 61754-2 TIA 604-2	IEC 61754-15 TIA 604-16	IEC 61754-6
THERMAL/MECHANICAL PERFORMANCE				
Pulling load (N)	100	100	100	70
Mating cycles	1000	1000	1000	1000
Working temperature	from -40C° to +85C°	from -40C° to +85C°	from -40C° to +85C°	from -40C° to +85C°
Materials UL94-V0	n/a	n/a	n/a	√
HOUSING COLOR				
SM PC	Metal (Blue Boot)	Metal (Blue Boot)	Blue	Blue
SM APC	Metal (Green Boot)	Metal (Green Boot)	Green	Green
MM	Metal (Black or beige Boot)	Metal (Black or beige Boot)	Beige	Beige
FIBER				
SM-R 9/125	√	√	√	√
MM 50/125 OM2 - OM3	√	√	√	√
MM 62,5/125 OM1	√	√	√	√
AVAILABLE FOR CABLES DIAMETER				
900 μm	√	√	√	√
1,60 mm	√	√	√	√
2 mm	√	√	√	√
3 mm	√	√	√	n/a
NOMINAL INSERTION LOSS (dB)				
SM PC (@1310 - 1550nm)				0,20
SM APC (@1310 - 1550nm)				0,15
MM (@850 - 1300nm)				0,25
NOMINAL RETURN LOSS (dB)				
SM PC (@1310 - 1550nm)				≥ 55
SM APC (@1310 - 1550nm)				≥ 65
MM (@850 - 1300nm)				≥ 20

SPECIFICATIONS



CONNECTOR TYPE	MT-RJ	MTP / MPO
Applicable standard	IEC 61754-18 TIA 604-12	IEC 61754-7
THERMAL/MECHANICAL PERFORMANCE		
Pulling load (N)	70	70
Mating cycles	500	1000
Working temperature	from -25C° to +70C°	from -20C° to +60C°
Materials UL94-V0	√	n/a
HOUSING COLOR		
SM PC	n/a	Black
SM APC	n/a	Green
MM	Black	Beige or Aqua
FIBER		
SM-R 9/125	n/a	√
MM 50/125 OM2 - OM3	√	√
MM 62,5/125 OM1	√	√
AVAILABLE FOR CABLES DIAMETER		
900 μm	n/a	n/a
1,60 mm	n/a	n/a
2 mm	√	n/a
3 mm	n/a	√
NOMINAL INSERTION LOSS (dB)		
SM PC (@1310 - 1550nm)	n/a	n/a
SM APC (@1310 - 1550nm)	n/a	0,35
MM (@850 - 1300nm)	0,30	0,35
NOMINAL RETURN LOSS (dB)		
SM PC (@1310 - 1550nm)	n/a	≥ 50
SM APC (@1310 - 1550nm)	n/a	≥ 55
MM (@850 - 1300nm)	≥ 20	≥ 20

FIBERNET IP68 CONNECTOR



IP68 CONNECTOR

Connector suitable for outdoor use with high IP protection grade, entirely designed and assembled by Fibernet

APPLICATIONS

- Industrial
- Fiber to the Antenna FTTA

FEATURES

- IP68 ensures total protection against the penetration of solid objects, dust and permanent water immersion
- Available both in Single mode and Multimode versions
- Grants protection for outdoor environments
- Easy to install: fixing system that blocks the rotation of fibers and connectors
- Closing cap that can also be used for the pulling of the cable
- Operating temperature $-40/+90^{\circ}\text{C}$



PRODUCT DETAILS

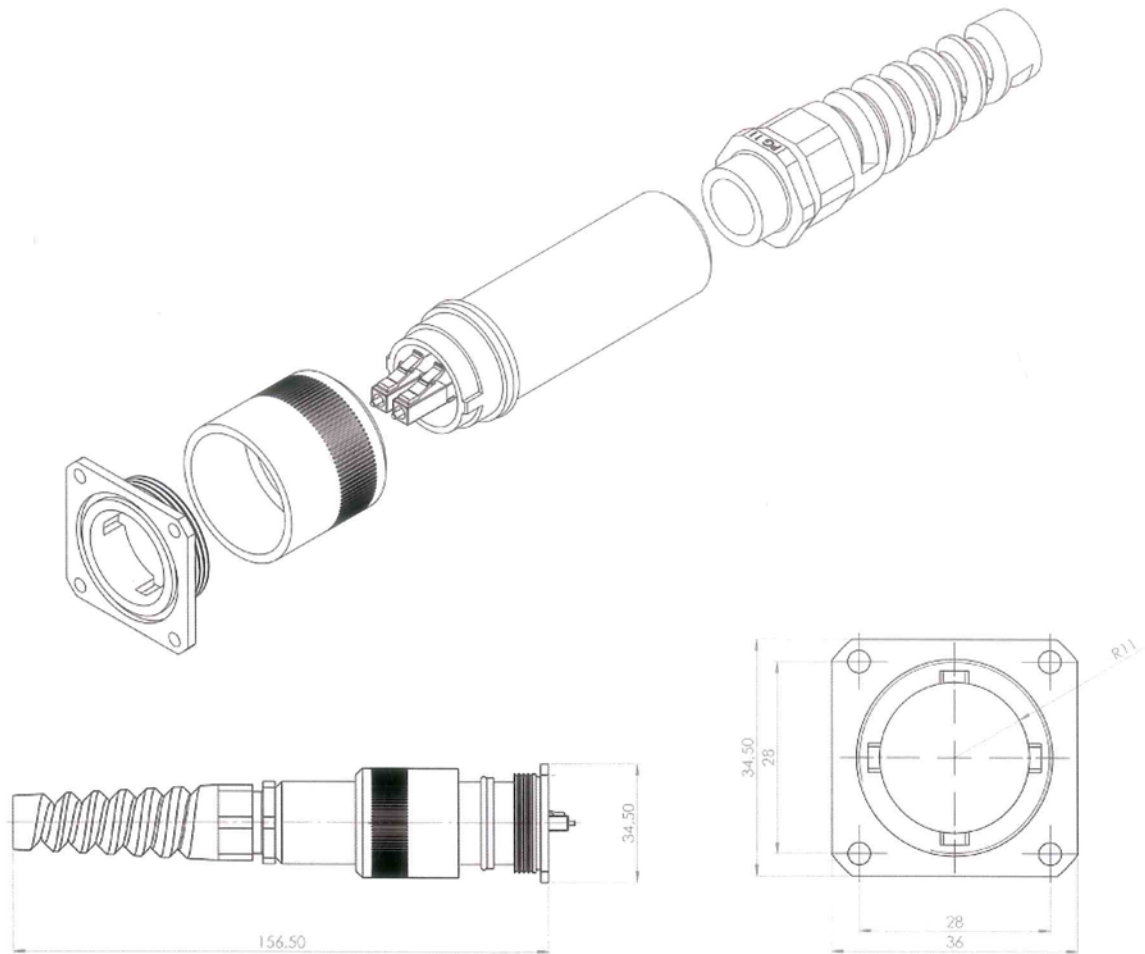


COUPLING BETWEEN CONNECTOR AND FLANGE



FLANGE

IP68 CONNECTOR



TECHNICAL SPECIFICATIONS

IP68 CONNECTOR

Reference standards

IEC 61076-3-106

DIMENSIONS

Maximal length (cm)

18 cm (connector+closing element)

Maximal diameter (cm)

3,2

Tensile strength (N)

250

Weight of connector+closing element (g)

300

Operating temperature (C)

-40/+90

Material

ABS (thermoplastic resin)

SPECIFICATIONS



ADAPTER	SC	FC	LC
Lifespan (insertion cycles)	1000	1000	1000
Working temperature	from -40C° to +85C°	from -40C° to +85C°	from -40C° to +85C°
Materials UL94-V0	✓	n/a	✓
BODY COLOR			
SM PC	Blue / Metal	Metal	Blue
SM APC	Green	Metal	Green
MM	Beige / Aqua	Metal	Beige / Aqua
FIBER			
SM-R 9/125	✓	✓	✓
MM 50/125 OM2 - OM3	✓	✓	✓
MM 62,5/125 OM1	✓	✓	✓
SPECIFICATIONS			
Materiale Sleeve	Zirconia (SM) Bronze (MM)	Zirconia (SM) Bronze (MM)	Zirconia (SM) Bronze (MM)
TYPICAL INSERTION LOSS (dB)			
SM PC (@1310 - 1550nm)		0,10	
SM APC (@1310 - 1550nm)		0,10	
MM (@850 - 1300nm)		0,20	

HOW TO ORDER

ADAPTER	SC	FC	LC
CODE Single mode PC	ADM0101ZX (with flange) ADM0101ZXNF (without flange)	ADM2121ZD (D-shape) ADM2121ZDD (DD-shape) ADM2121ZS (square)	ADM3131ZX ADM3131ZXD (diagonal sleeve)
CODE Single mode APC	ADM0404ZX (with flange) ADM0404ZXNF (without flange)	ADM2424ZD (D-shape) ADM2424ZS (square)	ADM3434ZX ADM3434ZXD (diagonal sleeve)
CODE Multi mode Standard	ADM0101BX (with flange)	ADM2121BD (D-shape) ADM2121BS (square)	ADM3131BX
CODE Multi mode OM3	ADM0101BX3 (with flange)	n/a	n/a

SIMPLEX ADAPTER



ADAPTER	ST	E2000	MU
Lifespan (insertion cycles)	1000	1000	1000
Working temperature	from -40C° to +85C°	from -40C° to +85C°	from -40C° to +85C°
Materiali UL94-V0	n/a	√	√
BODY COLOR			
SM PC	Metal	Blue	Brown /Metal
SM APC	Metal	Green	Green /Metal
MM	Metal	Beige	Beige /Metal
FIBER			
SM-R 9/125	√	√	√
MM 50/125 OM2 - OM3	√	√	√
MM 62,5/125 OM1	√	√	√
SPECIFICATIONS			
Material Sleeve	Zirconia (SM) Bronze (MM)	n/a	Zirconia (SM) Bronze (MM)
TYPICAL INSERTION LOSS (dB)			
SM PC (@1310 - 1550nm)		0.10	
SM APC (@1310 - 1550nm)		0.10	
MM (@850 - 1300nm)		0.20	

HOW TO ORDER

ADAPTER	ST	E2000	MU
CODE Single mode PC	ADM4141ZD (D-shape)	ADM7171ZC	ADM9191ZX
CODE Single mode APC	n/a	ADM7474ZU	n/a
CODE Multi mode Standard	ADM4141BD (D-shape)	n/a	n/a
CODE Multi mode OM3	n/a	n/a	n/a

SPECIFICATIONS



ADAPTER	SC	LC	E2000	MT-RJ
Lifespan (insertion cycles)	1000	1000	1000	500
Working temperature	da -40C° a +85C°	da -40C° a +85C°	da -40C° a +85C°	da -25C° a +70C°
Materials UL94-V0	√	√	√	√
BODY COLOR				
SM PC	Blue / Metal	Blue	Blue	Black
SM APC	Green	Green	Green	n/a
MM	Beige / Aqua	Beige / Aqua	Beige	Black
FIBER				
SM-R 9/125	√	√	√	√
MM 50/125 OM2 - OM3	√	√	√	√
MM 62,5/125 OM1	√	√	√	√
SPECIFICATIONS				
Materiale Sleeve	Zirconia (SM) Bronze (MM)	Zirconia (SM) Bronze (MM)	Zirconia (SM) Bronze (MM)	n/a
TYPICAL INSERTION LOSS (dB)				
SM PC (@1310 - 1550nm)			0,10	
SM APC (@1310 - 1550nm)			0,10	
MM (@850 - 1300nm)			0,20	

HOW TO ORDER

ADAPTER	SC	LC	E2000	MT-RJ
CODE Single mode PC	ADM0505ZX	ADM3535ZU ADM3535ZC (SC footprint)	n/a	n/a
CODE Single mode APC	ADM0606ZX	n/a	ADM7474ZX	n/a
CODE Multi mode Standard	ADM0505BU	ADM3535BU	n/a	ADM5151ZC (SC footprint)
CODE Multi mode OM3	n/a	ADM3535BA	n/a	n/a

SPECIFICATIONS



ADAPTER	SC2	LC	MTP / MPO
Lifespan (insertion cycle)	1000	1000	1000
Working temperature	from -40C° to +85C°	from -40C° to +85C°	from -40C° to +85C°
Materials UL94-V0	√	√	√
BODY COLOR			
SM PC	Blue	Blue	Black
SM APC	Green	Green	Green
MM	Beige / Aqua	Beige / Aqua	Black
FIBER			
SM-R 9/125	√	√	√
MM 50/125 OM2 - OM3	√	√	√
MM 62,5/125 OM1	√	√	√
SPECIFICATIONS			
Materiale Sleeve	Zirconia (SM) Bronze (MM)	Zirconia (SM) Bronze (MM)	n/a
TYPICAL INSERTION LOSS (dB)			
SM PC (@1310 - 1550nm)	0,10	0,10	0,10 ÷ 0,35
SM APC (@1310 - 1550nm)	0,10	0,10	0,10 ÷ 0,35
MM (@850 - 1300nm)	0,20	0,20	0,15 ÷ 0,35

HOW TO ORDER

ADAPTER	SC2	LC	MTP / MPO
CODE Single mode PC	ADM011ZX	n/a	n/a
CODE Single mode APC	ADM04ZX4	n/a	n/a

HYBRID ADAPTER

female - female
male - female

SPECIFICATIONS



ADAPTER	SC - LC	SC - ST	FC - LC	FC - ST
Lifespan (insertion cycles)	1000	1000	1000	500
Working temperature	from -40C° to +85C°	from -40C° to +85C°	from -40C° to +85C°	from -40C° to +85C°
Type	male - female	female - female	male - female	female - female
BODY COLOR				
SM PC	Metal / Blue	Metal	Metal / Blue	Metal
SM APC	Metal / Green	Metal	Metal / Green	Metal
MM	Metal / Beige	Metal	Metal / Beige	Metal
FIBER				
SM-R 9/125	√	√	√	√
MM 50/125 OM2 - OM3 - OM4	√	√	√	√
MM 62,5/125 OM1	√	√	√	√
SPECIFICATIONS				
Materiale Sleeve	Zirconia (SM) Bronze (MM)	Zirconia (SM) Bronze (MM)	Zirconia (SM) Bronze (MM)	Zirconia (SM) Bronze (MM)
TYPICAL INSERTION LOSS (dB)				
SM PC (@1310 - 1550nm)			0,10	
SM APC (@1310 - 1550nm)			0,10	
MM (@850 - 1300nm)			0,20	

HOW TO ORDER

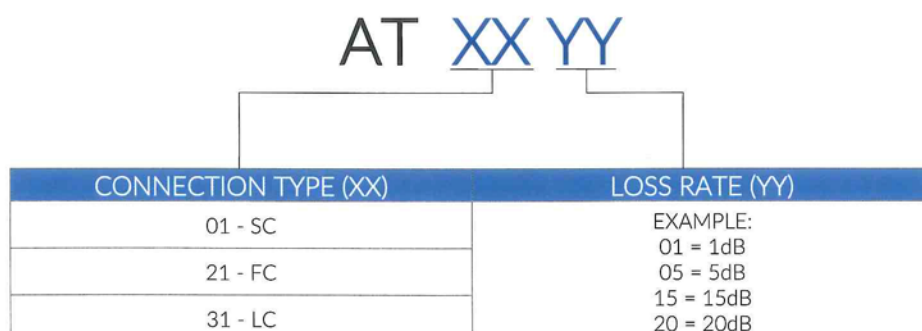
ADAPTER	SC (female) LC (male)	SC (female) ST (female)	FC (male) LC (female)	FC (female) ST (female)
CODE Single mode PC	ADH0131X	ADH0141X	ADH2131X	ADH2141X

SPECIFICATIONS



ATTENUATOR	SC	FC	LC
Standard rules		GR - 910 - CORE	
Lifespan (insertion cycles)	1000	1000	1000
Working temperature	from -40C° to +75C°	from -40C° to +75C°	from -40C° to +75C°
Materials UL94-V0	n/a	n/a	√
BODY COLOR			
SM PC	Blue / Metal	Metal	Blue
SM APC	Green / Metal	Metal	Green
MM	Beige	Metal	Beige / Aqua
OPTICAL SPECIFICATIONS			
Working wavelenght		1250 ÷ 1650 nm	
Available attenuation levels (1dB paces)		from 1 to 20 dB	
Tolerance from 1 to 10dB		± 0,5 dB	
Tolerance from 11 to 20dB		± 5%	
TYPICAL RETURN LOSS (dB)			
SM PC (@1310 - 1550nm)		≥ 50	
SM APC (@1310 - 1550nm)		≥ 65	
MM (@850 - 1300nm)		≥ 20	

HOW TO ORDER



SPECIFICATIONS



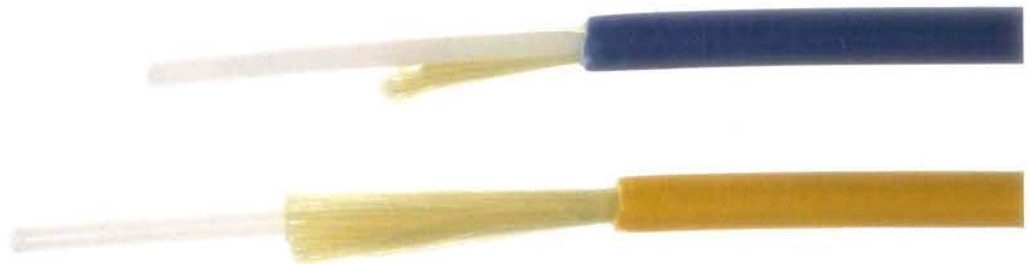
ATTENUATOR	ST	MU	MU SLIM	SC2
Standard rules	GR - 910 - CORE			
Lifespan (insertion cycles)	1000	1000	1000	1000
Working temperature	from -40C° to +75C°	from -40C° to +75C°	from -40C° to +75C°	from -25C° to +75C°
Materials UL94-V0	n/a	√	n/a	√
BODY COLOR				
SM PC	Metal	Brown	Brown / Metal	Blue
SM APC	Metal	Green	Green / Metal	Green
MM	Metal	Brown	Brown / Metal	Beige / Aqua
OPTICAL SPECIFICATIONS				
Working wavelenght	1250 ÷ 1650 nm			
Available attenuation levels (1dB paces)	from 1 to 20 dB			
Tolerance from 1 to 10dB	± 0,5 dB			
Tolerance from 11 to 20dB	± 5%			
TYPICAL RETURN LOSS (dB)				
SM PC (@1310 - 1550nm)	≥ 50			
SM APC (@1310 - 1550nm)	≥ 65			
MM (@850 - 1300nm)	≥ 20			

HOW TO ORDER

AT XX YY

CONNECTION TYPE (XX)	LOSS RATE (YY)
41 - ST	EXAMPLE: 01 = 1dB 05 = 5dB 15 = 15dB 20 = 20dB
91 - MU	
91SLIM - MU SLIM	
11 - SC2	

SINGLE MODE & MULTI MODE SIMPLEX **CABLE**



SINGLE FIBER (MONO) CABLE

Made by a tight or semi-tight coated fiber reinforced with aramid yarns and LSZH sheath. It is possible to order the cable with all available connectors.

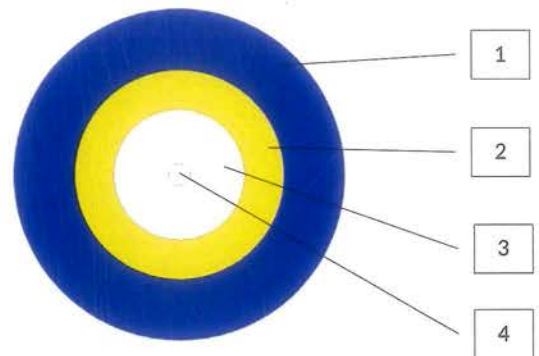
APPLICATIONS

- Indoor network links (TLC, Data centers, etc...)

FEATURES

- Ideal for indoor areas
- Easy to install
- SM or MM fiber on request
- Strength elements in aramid yarns
- LSZH sheath

PRODUCT DETAILS

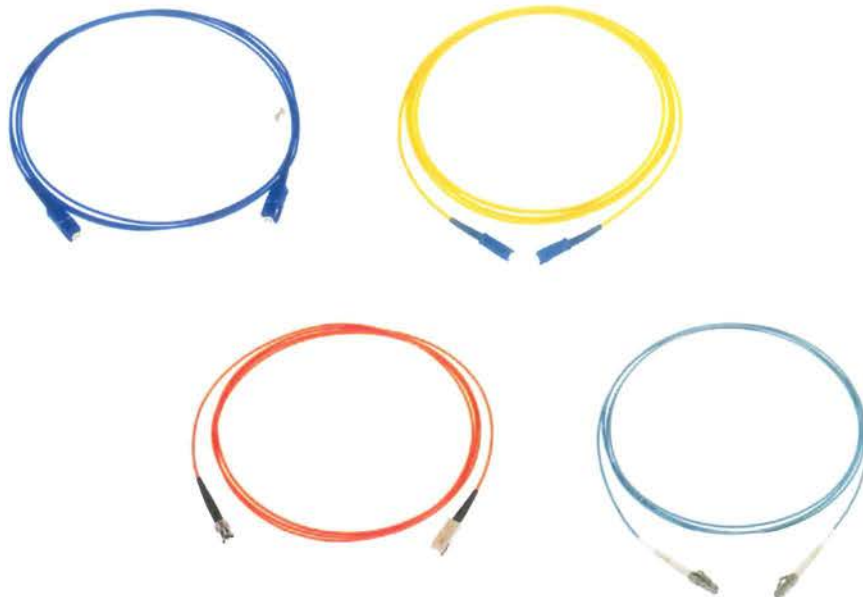


CABLE SECTION

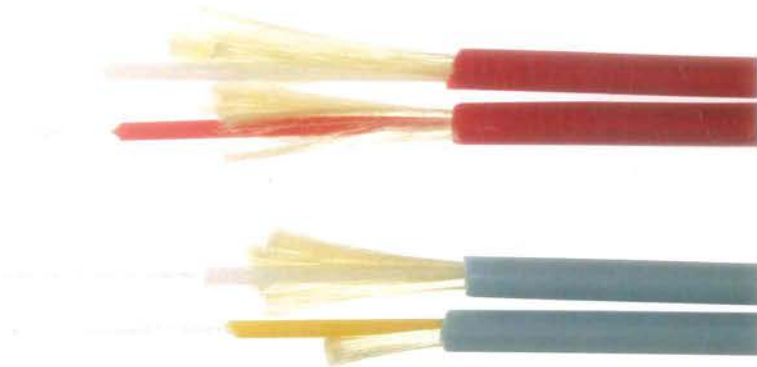
1. LSZH sheath
2. Strength elements in aramid (kevlar)
3. 900 μm tight buffer
4. 250 μm primary sheath

SPECIFICATIONS

CABLE	MONOFIBER	
Normative di riferimento	CEI/EN 60793-1	CEI/EN 60794-1 CEI/EN 60332-3 CEI/EN 60332-1
MECHANICAL/TERMICHAL PERFORMANCE		
Cable diameter (mm)	2	1.6
Pulling resistance (N)	200	200
Crushing resistance (N/100mm)	150	150
Installing/permanent minimum bending radius (mm)	20 times its diameter / 10 times its diameter	
Working temperature (°C)	-20 / +80	
Installing temperature (°C)	-5 / +60	
Storage temperature (°C)	-30 / +80	
MATERIALS		
Outer sheath	LSZH	
Outer sheath color	For SM fiber: BLUE, YELLOW - For MM fiber: ORANGE, GREEN, GREY, AQUA, VIOLET	
Secondary sheath	TIGHT or SEMITIGHT	
Reinforcement	Aramid yarns	
FIBER		
SM and MM	SM: G.652D, G.657A, G.655 - MM: 62.5/125 OM1 , 50/125 OM2/OM3/OM4	
CONSTRUCTION SPECIFICATIONS		
Number of fibers	1	
Cable dimensions (mm)	2.0	1.6
Buffer diameter (mm)	0,9	
Weight (kg/km)	4.0	2.0
Connectors	SC - SC2 - LC - FC - ST - MU - E2000 - SMA	



SINGLE MODE & MULTI MODE DOUBLE FIBER CABLE



DOUBLE FIBER CABLE

Made by two single fiber cables flanked with a LSZH sheath, easy to spare. It is possible to order the cable with all available connectors.

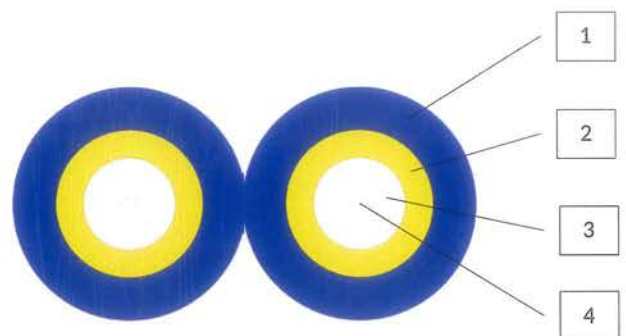
APPLICATIONS

- Indoor network patch cords for temperature controlled areas (TLC, Data centers, etc..)

FEATURES

- Ideal for indoor areas
- Easy to install
- SM or MM fiber on request
- Aramid yarn reinforcements
- LSZH sheath

PRODUCT DETAILS

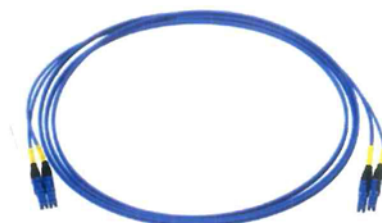


CABLE SECTION

1. LSZH sheath
2. Aramid yarn reinforcement (kevlar)
3. 900 µm tight or semi-tight coat
4. 250 µm primary coated optical fiber

SPECIFICATIONS

CABLE	DOUBLE FIBER			
Applicable standards	CEI/EN 60793-1	CEI/EN 60794-1	CEI/EN 60332-3	CEI/EN 60332-1
MECHANICAL/THERMICAL PERFORMANCE				
Cable diameter (mm)	1.6 x 3.2		2.0 x 4.0	
Pulling resistance (N)	400		600	
Crushing resistance (N/100mm)	200		200	
Installing/permanent minimum bending radius (mm)	20 times its diameter / 10 times its diameter			
Working temperature (°C)	-20 / +80			
Installing temperature (°C)	-5 / +60			
Storage temperature (°C)	-30 / +80			
MATERIALS				
Outer sheath	LSZH			
Outer sheath color	For SM fiber: BLUE, YELLOW - For MM fiber: ORANGE, GREEN, GREY, AQUA, VIOLET			
Secondary sheath	TIGHT or SEMITIGHT			
Reinforcement	Aramid yarns			
FIBER				
SM e MM	SM: G.652D, G.657A, G.655 - MM: 62.5/125 OM1 , 50/125 OM2/OM3/OM4			
CONSTRUCTION SPECIFICATIONS				
Number of fibers	2			
Cable dimensions (mm)	1.6 x 3.2		2.0 x 4.0	
Buffer diameter (mm)	0.9			
Weight (kg/km)	5.0		10.0	
Connectors	SC - LC - FC - ST - MU - E2000 - SMA			



ARMoured SINGLE FIBER CABLE



ARMoured SINGLE FIBER CABLE

Made with a reinforced fiber with 900µm metal heliocoidal armor that offers a great protection. It is possible to order the cable with all available connectors.

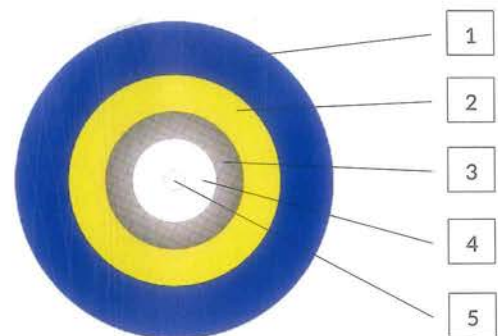
APPLICATIONS

- Indoor/outdoor connection patch cords (TLC, Data center, Repeaters, Antennas...)

FEATURES

- Great resistance to crush and rodents
- Easy to install
- SM or MM fiber on request
- Aramid yarns reinforcements
- LSZH sheath

PRODUCT DETAILS



CABLE SECTION

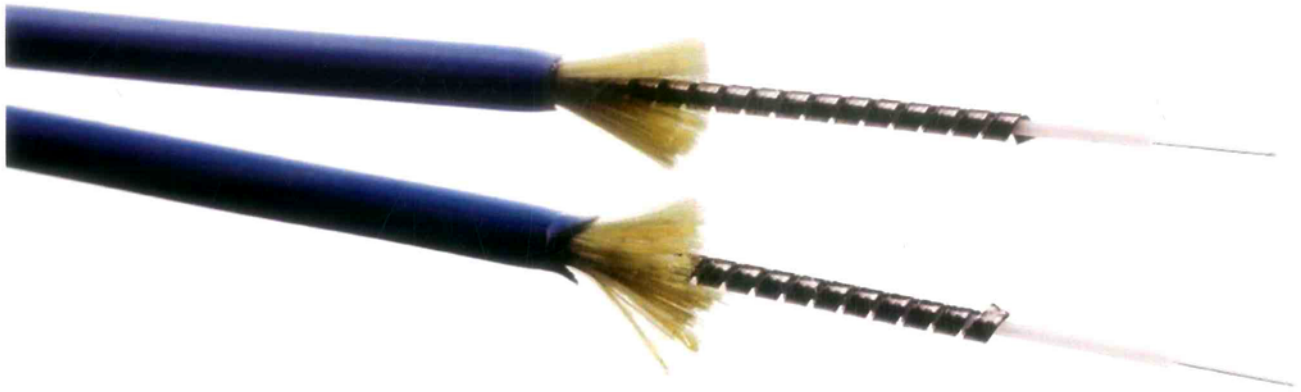
1. LSZH sheath
2. Aramid yarns reinforcements (kevlar)
3. 900 µm metal armor
4. 500 µm secondary sheath
5. 250 µm primary sheath optical fiber

SPECIFICATIONS

CABLE	METAL ARMoured SINGLE FIBER					
Applicable standards	CEI/EN 60793-1 CEI/EN 60794-1 CEI/EN 60332-3 CEI/EN 60332-1					
MECHANICAL/TERMINAL PERFORMANCE						
Available diameter (mm)	1,6	1,8	2,0	2,4	2,8	3,0
Temporary/permanent pulling resistance (N)	60/30	80/40	150/80	200/100	300/150	450/200
Crushing resistance (N/100mm)	5.000	5.000	4.500	4.500	3.500	3.500
Installing/permanent minimum bending radius (mm)	50/30	50/30	50/30	50/30	60/30	60/30
Working temperature (°C)	-40 / +70					
Installing temperature (°C)	-5 / +70					
Storage emperature (°C)	-40 / +70					
MATERIALS						
Outer sheath	LSZH					
Outer sheath color	BLUE (G.652D) - GREY (G.657A) - GREEN (G.655) - ORANGE or GREY (MM)					
Micro-spyral metal protection	SUS304, SUS204 steel					
Reinforcement	Aramid yarn					
FIBER						
SM and MM	SM: G.652D, G.657A, G.655 - MM: 62,5/125 OM1 , 50/125 OM2/OM3/OM4					
CONSTRUCTION PERFORMANCE						
Number of fibers	1					
Outer cable diameter (mm)	1,6 ±0,1	1,8±0,1	2,0±0,1	2,4±0,1	2,8±0,1	3,0±0,1
Metal protection diameter (mm)	0,6±0,1	0,9±0,1	0,9±0,1	0,9±0,1	0,9±0,1	1,4±0,1
Buffer diameter (mm)	0,25	0,5	0,5	0,5	0,5	0,9
Weight (kg/km)	3,8	4,8	6,5	7,0	10,5	11,0
Connectors	SC - SC2 - LC - FC - ST - MU - E2000 - SMA					



ARMOURED ZIP DUPLEX CABLE



ARMOURED ZIP DUPLEX CABLE

Made by two simplex cables with an helical steel tape that offers more protection to the fibers. The cable is supplied with any type of connector.

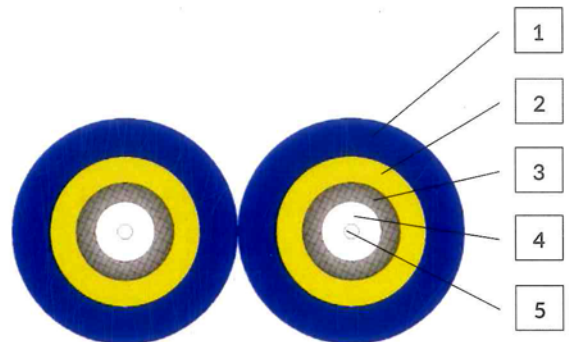
APPLICATIONS

- Indoor/outdoor optical links (TLC, Data center, harsh environments)

FEATURES

- Great resistance to crush and rodents
- Easy to install
- SM or MM fiber on request
- Strength elements in aramid yarns
- LSZH sheath

PRODUCT DETAILS

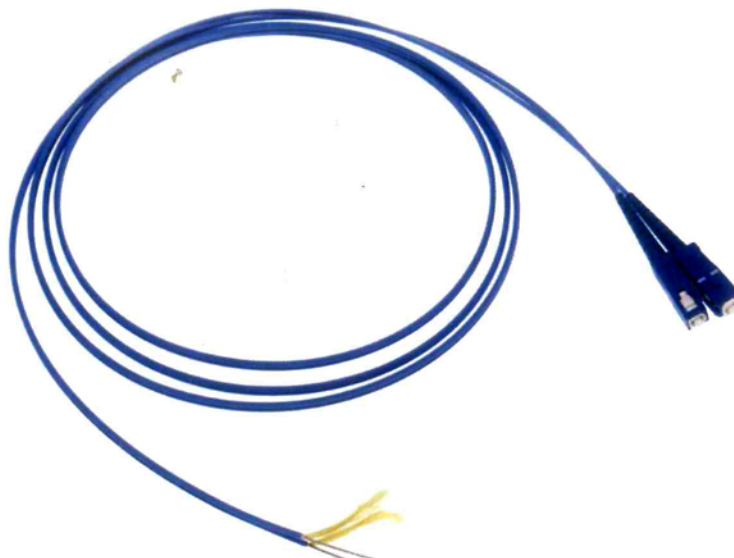


CABLE SECTION

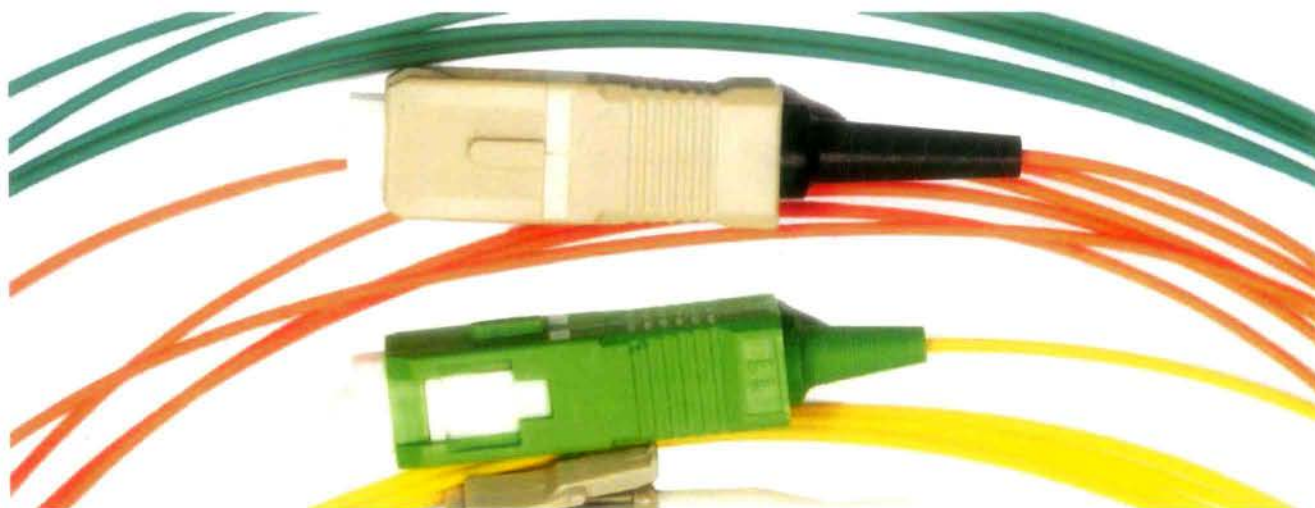
- LSZH sheath
- Strength elements in aramid yarns (kevlar)
- 900 µm metal armor
- 500 µm tight buffer
- 250 µm primary sheath

SPECIFICATIONS

CABLE	METAL ARMoured DOUBLE FIBER					
Applicable standards	CEI/EN 60793-1	CEI/EN 60794-1	CEI/EN 60332-3	CEI/EN 60332-1		
MECHANICAL/THERMAL PERFORMANCE						
Available diameter (mm)	1,6x3,2	1,8x3,6	2,0x4,0	2,4x4,8	2,8x5,6	3,0x6,0
Temporary/permanent pulling resistance (N)	60/30	80/40	150/80	200/100	300/150	450/200
Crushing resistance (N/100mm)	5.000	5.000	4.500	4.500	3.500	3.500
Installing/permanent minimum bending radius (mm)	50/30	50/30	50/30	50/30	60/30	60/30
Working temperature (°C)	-40 / +70					
Installing temperature (°C)	-5 / +70					
Storage temperature (°C)	-40 / +70					
MATERIALS						
Outer sheath	LSZH					
Outer sheath color	BLUE (G.652D) - GREY (G.657A) - GREEN (G.655) - ORANGE or GREY (MM)					
Micro-spyral metal protection	SUS304, SUS204 Steel					
Reinforcement	Aramid yarns					
FIBER						
SM and MM	SM: G.652D, G.657A, G.655 - MM: 62,5/125 OM1 , 50/125 OM2/OM3/OM4					
CONSTRUCTION PERFORMANCE						
Number of fibers	2					
Outer cable diameter (mm)	1,6x3,2 ±0,1	1,8x3,6 ±0,1	2,0x4,0 ±0,1	2,4x4,8 ±0,1	2,8x5,6 ±0,1	3,0x6,0 ±0,1
Metal protection diameter (mm)	0,6±0,1	0,9±0,1	0,9±0,1	0,9±0,1	0,9±0,1	1,4±0,1
Buffer diameter (mm)	0,25	0,5	0,5	0,5	0,5	0,9
Weight (kg/km)	3,8	4,8	6,5	7,0	10,5	11,0
Connectors	SC - SC2 - LC - FC - ST - MU - E2000 - SMA					



SINGLE MODE & MULTI MODE PIGTAIL



SINGLE AND MULTI MODE PIGTAILS

Used to terminate optical cables by fusion splicer. It is possible to request the pigtail with all available connectors.

APPLICATIONS

- Optical cables termination

FEATURES

- Available with all possible fiber and connector
- Easy to install
- Reworkable (in case the splice is not ok)
- LSZH sheath

PRODUCT DETAILS



PIGTAIL 50/125
OM3 SC/PC

SPECIFICATIONS

MECHANICAL/TERMINAL/OPTICAL PERFORMANCE

Fiber-connector pulling resistance (N)	5
Temporary/permanent bending radius (mm)	>20 / >40
Working temperature (°C)	-25 / +70
Typical insertion loss (dB)	SM: 0,15 - MM: 0,30
Typical return loss (dB)	PC: >50 - APC: >65

MATERIALS

Outer sheath LSZH or nylon (tight or semitight)

FIBER

SM and MM SM: G.652D, G657A (bend insensitive) - MM: 62.5/125 (OM1), 50/125 (OM2, OM3,OM4)

CONSTRUCTION SPECIFICATIONS

Sheath diameter (µm)	0,850 ±50
Typical length (m)	2
Connectors	SC - LC - FC - ST - MU - E2000

HOW TO ORDER

CODE	PRODUCT
PC01XXE1020	Pigtail SM-R 9/125 G652 Tight Ø 0,9mm SC/PC L= 2 m
PC04XXE1020	Pigtail SM-R 9/125 G652 Tight Ø 0,9mm SC/APC L= 2 m
PC21XXE1020	Pigtail SM-R 9/125 G652 Tight Ø 0,9mm FC/PC L= 2 m
PC31XXE1020	Pigtail SM-R 9/125 G652 Tight Ø 0,9mm LC/PC L= 2 m
PC41XXE1020	Pigtail SM-R 9/125 G652 Tight Ø 0,9mm ST/PC L= 2 m
PC01XXE5020	Pigtail SM-R 9/125 G657 A Tight Ø 0,9mm SC/PC L= 2 m
PC31XXE5020	Pigtail SM-R 9/125 G657 A Tight Ø 0,9mm LC/PC L= 2 m
PC04XXE5020	Pigtail SM-R 9/125 G657 A Tight Ø 0,9mm SC/APC L= 2 m
PC34XXE5020	Pigtail SM-R 9/125 G657 A Tight Ø 0,9mm LC/APC L= 2 m
PC01XXT1020	Pigtail MM 62,5/125 Tight Ø 0,9mm SC/PC L= 2 m
PC21XXT1020	Pigtail MM 62,5/125 Tight Ø 0,9mm FC/PC L= 2 m
PC31XXT1020	Pigtail MM 62,5/125 Tight Ø 0,9mm LC/PC L= 2 m
PC41XXT1020	Pigtail MM 62,5/125 Tight Ø 0,9mm ST/PC L= 2 m
PC01XXU1020	Pigtail MM 50/125 Tight Ø 0,9mm SC/PC L= 2 m
PC21XXU1020	Pigtail MM 50/125 Tight Ø 0,9mm FC/PC L= 2 m
PC31XXU1020	Pigtail MM 50/125 Tight Ø 0,9mm LC/PC L= 2 m
PC41XXU1020	Pigtail MM 50/125 Tight Ø 0,9mm ST/PC L= 2 m
PC01XXN1020	Pigtail MM 50/125 OM3 Tight Ø 0,9mm SC/PC L= 2 m
PC31XXN1020	Pigtail MM 50/125 OM3 Tight Ø 0,9mm LC/PC L= 2 m

SINGLE MODE COLORED PIGTAIL KIT

CODE: PC01XXE7020 – 24 colored pigtail kit SC/PC easy strip
CODE: PC04XXE7020 – 24 colored pigtail kit SC/APC easy strip
CODE: PC31XXE7020 – 24 colored pigtail kit LC/PC easy strip
CODE: PC34XXE7020 – 24 colored pigtail kit LC/APC easy strip



SINGLE MODE COLORED PIGTAIL KIT

*Used to terminate optical cables by fusion splicer.
The different sheath colors help the installer to
identify each fiber.*

APPLICATIONS

- Optical cables termination

FEATURES

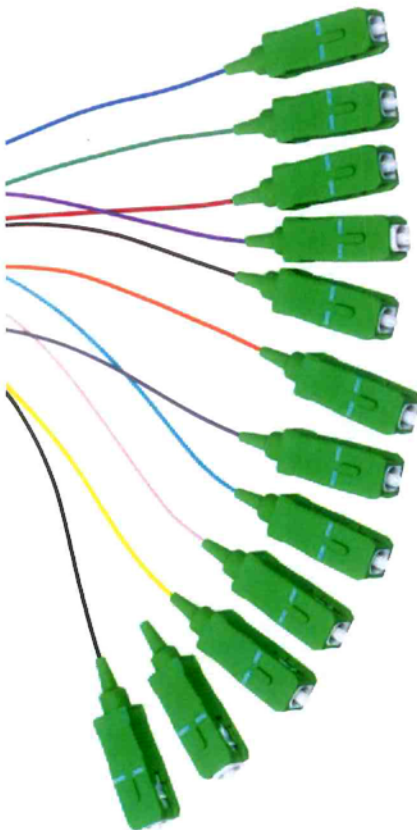
- Prompt fiber recognition, thanks to the different colors (according to Telecom specifications)
- Easy to install
- Reworkable (in case the splice is not ok)
- LSZH sheath
- Easy strip
- Small insertion loss

PRODUCT DETAILS



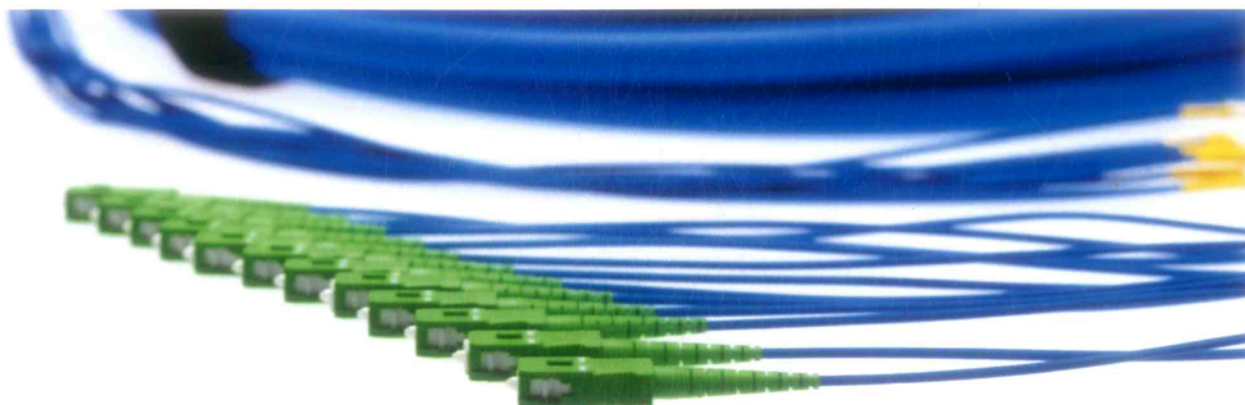
SPECIFICATIONS

PRODUCT	SINGLE MODE COLORED PIGTAIL KIT G657			
Normative di riferimento	IEC 61754-4	TIA 604-3	IEC 61754-20	TIA 604-10-A
MECHANICAL/TERMICAL/OPTICAL PERFORMANCE				
Fiber-connector pulling resistance (N)	5			
Temporary / permanent bending radius (mm)	> 20 / >40			
Working temperature (°C)	-25 / +70			
Typical insertion loss (dB)	SM: 0,15 - MM: 0,30			
Typical return loss (dB)	PC: >50 - APC: >65			
MATERIALS				
Outer colored sheath	LSZH or Nylon (tight or semitight easy strip)			
FIBER				
Single mode	G.657A (bend insensitive)			
CONSTRUCTION SPECIFICATIONS				
Sheath diameter (µm)	0,850 ±50			
Typical lenght (m)	2			
Connectors	SC/PC - SC/APC - LC/PC - LC/APC			



N. Fiber	Color	N. Fiber	Color
1	Red	13	Red + black ring
2	Green	14	Green + black ring
3	Yellow	15	Yellow + black ring
4	Brown	16	Brown + black ring
5	Blue	17	Blue + black ring
6	Violet	18	Violet + black ring
7	Black	19	Black + black ring
8	Pink	20	Pink + black ring
9	Orange	21	Orange + black ring
10	Turquoise	22	Turquoise + black ring
11	White	23	White + black ring
12	Grey	24	Grey + black ring

SINGLEMODE BLUE BREAKOUT CABLE



SINGLEMODE BLUE BREAKOUT CABLE

Multi fiber cable made by 2mm diameter optical patch cords helically wrapped on a central element. It is possible to order the cable terminated with all connectors.

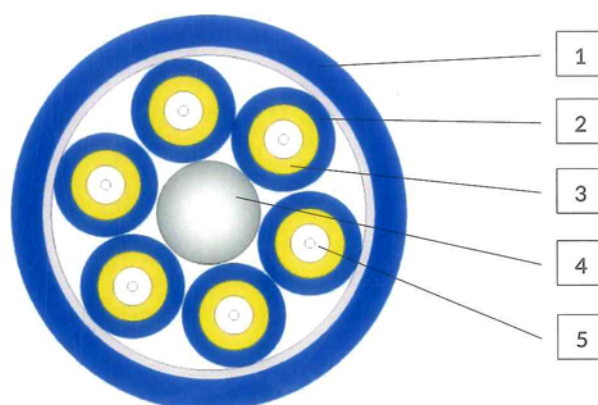
APPLICATIONS

- Data center and TLC infrastructures
- Internal optical links

FEATURES

- Strong, flexible and easy to install
- Ideal for indoor applications, thanks to the LSZH sheath
- Great mechanic resistance
- Totally dielectric

PRODUCT DETAILS



CABLE SECTION

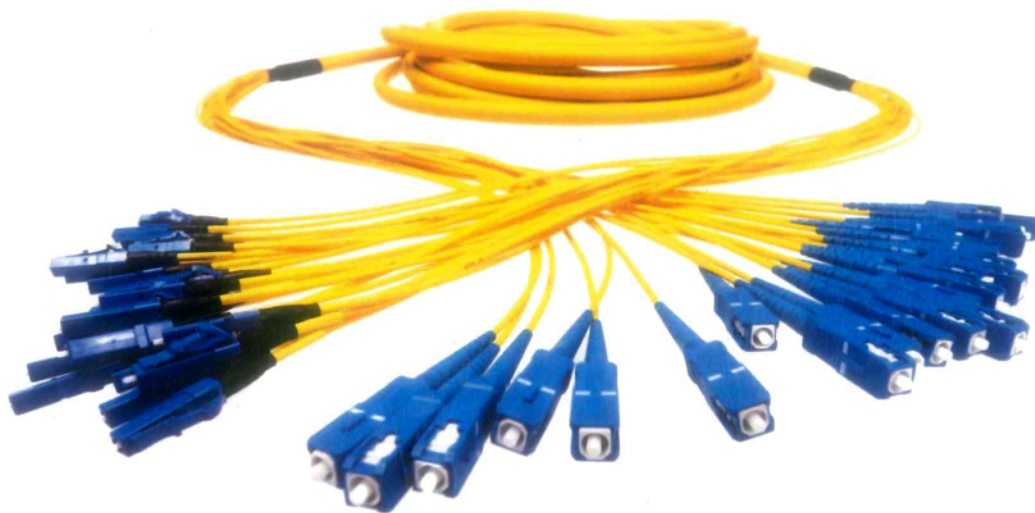
1. LSZH outer sheath (RAL 5015)
2. Simplex cable LSZH sheath (RAL 5015)
3. Strengthening elements in aramid yarns
4. Central dielectric pulling element (FRP)
5. Tight buffered fiber

SPECIFICATIONS

CABLE		SINGLE MODE BLUE BREAKOUT CABLE					
Applicable standards	CEI/EN 60793 CEI/EN 60794-1						
MECHANICAL/THERMICAL PERFORMANCE							
Pulling load resistance (N)	4-6 fo: 600 / 800	8 - 12 - 16 fo: 1.000 / 1.500 / 2000			18 - 24 fo: 2.000 / 2.500		
Crush resistance (N/cm)	From 200 to 250						
Static bending radius (mm)	10 times x outer diameter						
Dynamic bending radius (mm)	20 times x outer diameter						
Working temperature (°C)	-20 / +60						
Installing temperature (°C)	-10 / +60						
Storage temperature (°C)	-30 / +80						
MATERIALS							
Breakout outer sheath	LSZH (blue RAL 5015)						
Simplex outer sheath	LSZH (blue RAL 5015)						
Fiber buffer	Nylon - TIGHT						
Simplex strength member	Aramid yarns						
FIBER							
SM 9/125	G.652D / G.657-A1 / G.657-A2 / NZD (G.655 / G.656)						
CONSTRUCTION SPECIFICATIONS							
Number of fibers	4	6	8	12	16	18	24
Breakout outer diameter (mm)	7,5	9	10	12,7	13	13,2	15
Weight (kg/km)	50	75	100	125	135	150	200
Buffer diameter (µm)	850 ±50						
Simplex cable outer diameter (mm)	2 ±0,1						
Connectors	SC - LC - FC - ST - MU - E2000						



SINGLEMODE YELLOW BREAKOUT CABLE



SINGLEMODE YELLOW BREAKOUT CABLE

Multi fiber cable made by 2mm diameter optical patch cords helically wrapped on a central element. It is possible to order the cable terminated with all connectors.

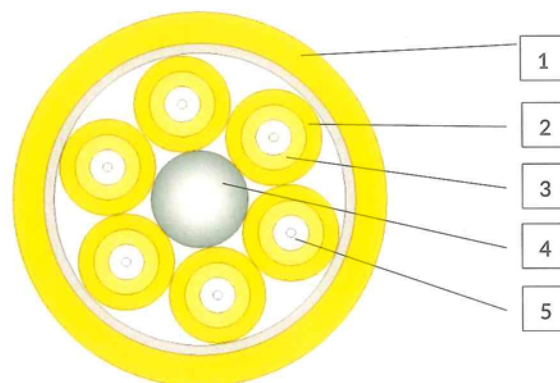
APPLICATIONS

- Data centers and TLC infrastructures
- Internal optical links

FEATURES

- Strong, flexible and easy to install
- Ideal for indoor applications, thanks to the LSZH sheath
- Great mechanic resistance
- Totally dielectric

PRODUCT DETAILS

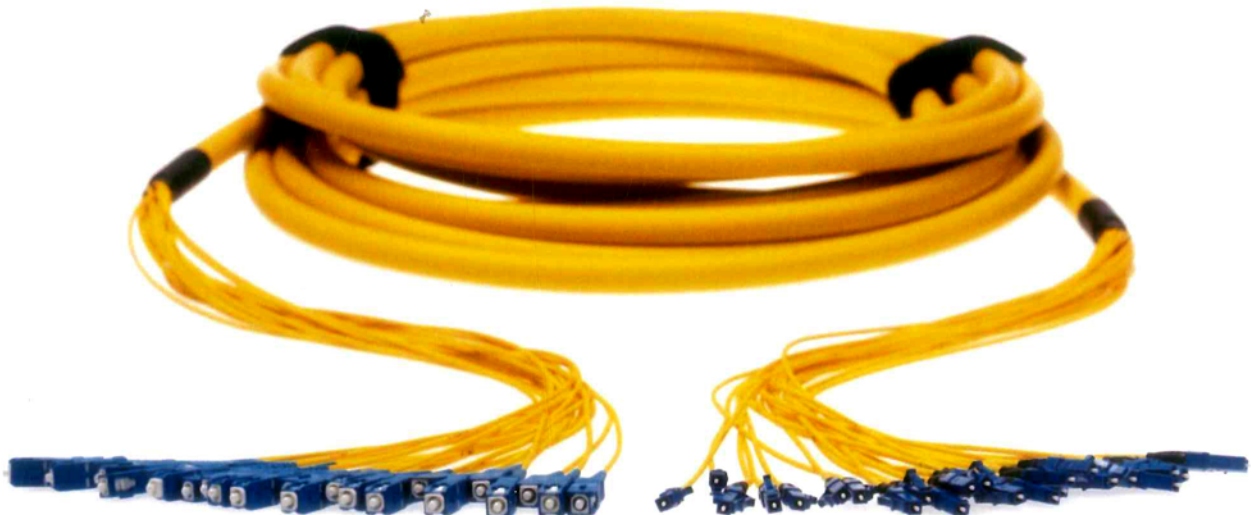


CABLE SECTION

1. LSZH outer sheath (RAL 1018)
2. Simplex cable LSZH sheath (RAL 1018)
3. Strengthening elements in aramid yarns
4. Central dielectric pulling element (FRP)
5. Semi-tight buffered fiber

SPECIFICATIONS

CABLE		SINGLEMODE YELLOW BREAKOUT CABLE					
Applicable standards	CEI/EN 60793 CEI/EN 60794-1						
MECHANICAL/THERMICAL PERFORMANCE							
Pulling load resistance (N)	4-6 fo: 600 / 800	8 - 12 - 16 fo: 1.000 / 1.500 / 2000			18 - 24 fo: 2.000 / 2.500		
Crush resistance (N/cm)	Da 200 a 250						
Static bending radius (mm)	10 times x outer diameter						
Dynamic bending radius (mm)	20 times x outer diameter						
Working temperature (°C)	-20 / +80						
Installing temperature (°C)	-10 / +60						
Storage temperature (°C)	-30 / +80						
MATERIALS							
Breakout outer sheath	LSZH (yellow RAL 1018)						
Simplex outer sheath	LSZH (yellow RAL 1018)						
Fiber buffer	Nylon - SEMITIGHT						
Simplex strength member	Aramid yarns						
FIBER							
SM 9/125	G.652D / G.657-A1 / G.657-A2 / NZD (G.655 / G.656)						
CONSTRUCTION SPECIFICATIONS							
Number of fibers	4	6	8	12	16	18	24
Breakout outer diameter (mm)	7,5	9	10	12,7	13	13,2	15
Weight (kg/km)	50	75	100	125	135	150	200
Buffer diameter (µm)	850 ±50						
Simplex cable outer diameter (mm)	2 ±0,1						
Connectors	SC - LC - FC - ST - MU - E2000						



MULTIMODE ORANGE BREAKOUT CABLE



MULTIMODE BREAKOUT ORANGE CABLE

Multi fiber cable made by 2mm diameter optical patch cords helically wrapped on a central element. It is possible to order the cable terminated with all connectors.

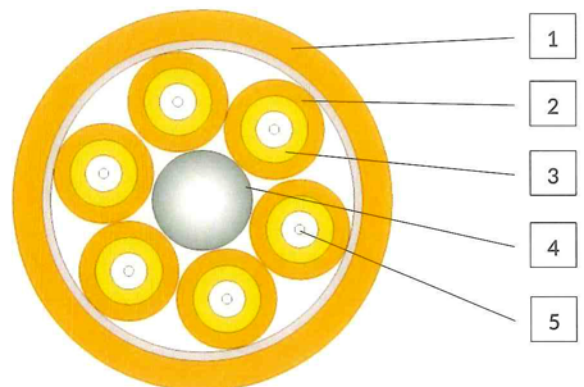
APPLICATIONS

- Data centers and TLC infrastructures
- Indoor optical links

FEATURES

- Strong, flexible and easy to install
- Ideal for indoor applications, thanks to the LSZH sheath
- Great mechanic resistance
- Totally dielectric

PRODUCT DETAILS

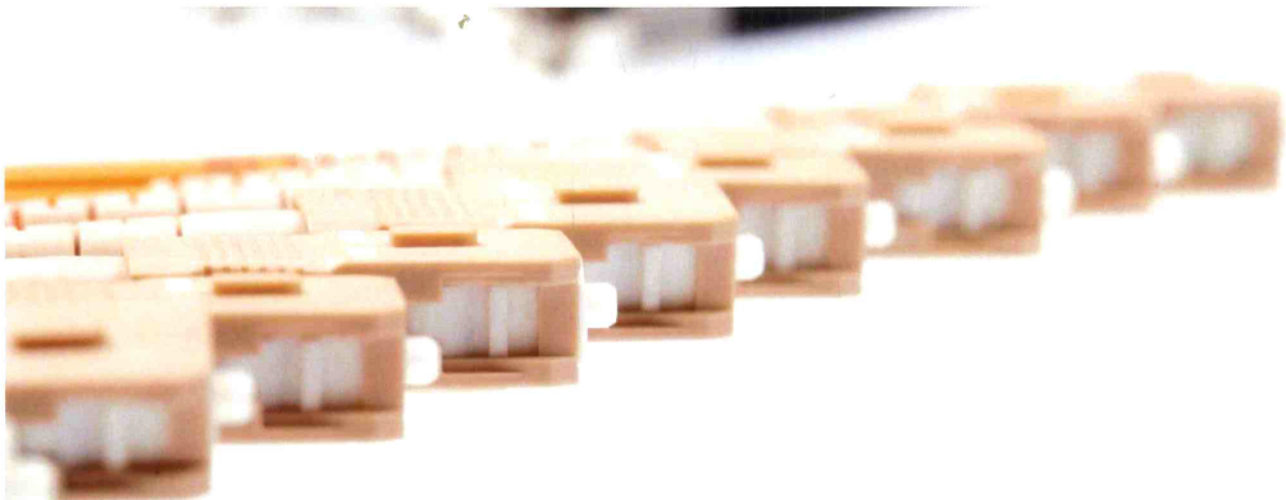


CABLE SECTION

1. LSZH outer sheath (RAL 2004)
2. Simplex cable LSZH sheath (RAL 2004)
3. Strengthening elements in aramid yarns
4. Central dielectric pulling element (FRP)
5. Tight buffered fiber

SPECIFICATIONS

CABLE		MULTIMODE BREAKOUT ORANGE CABLE					
Applicable standards	CEI/EN 60793 CEI/EN 60794-1						
MECHANICAL/THERMICAL PERFORMANCE							
Pulling load resistance (N)	4-6 fo: 600 / 800	8 - 12 - 16 fo: 1.000 / 1.500 / 2000			18 - 24 fo: 2.000 / 2.500		
Crush resistance (N/cm)	From 200 to 250						
Static bending radius (mm)	10 times x outer diameter						
Dynamic bending radius (mm)	20 times x outer diameter						
Working temperature (°C)	-20 / +80						
Installing temperature (°C)	-10 / +60						
Storage temperature (°C)	-30 / +80						
MATERIALS							
Breakout outer sheath	LSZH (orange RAL 2004)						
Simplex outer sheath	LSZH (orange RAL 2004)						
Fiber buffer	Nylon - TIGHT						
Simplex strength member	Aramid yarns						
FIBER							
MM 62,5 / 125	OM1 (ITU-T G.651)						
MM 50 / 125	OM2 (ITU-T G.651)						
CONSTRUCTION SPECIFICATIONS							
Number of fibers	4	6	8	12	16	18	24
Breakout outer diameter (mm)	7,5	9	10	12,7	13	13,2	15
Weight (kg/km)	50	75	100	125	135	150	200
Buffer diameter (µm)	850 ±50						
Simplex cable outer diameter (mm)	2 ±0,1						
Connectors	SC - LC - FC - ST - MU - E2000						



MULTIMODE OM3 AQUA BREAKOUT CABLE



MULTIMODE OM3 BREAKOUT CABLE

Multi fiber cable made by 2mm diameter optical patch cords helically wrapped on a central element. It is possible to order the cable terminated with all connectors.

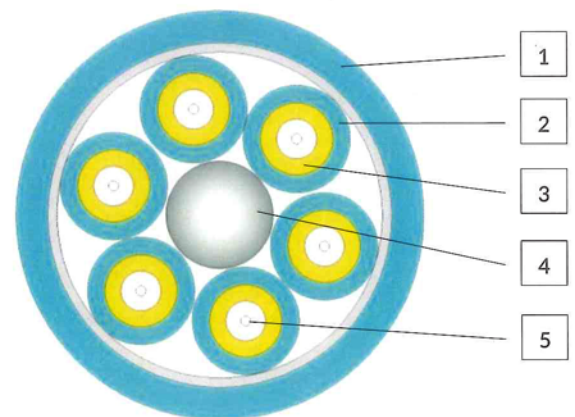
APPLICATIONS

- Data centers and TLC infrastructures
- Internal optical links

FEATURES

- Strong, flexible and easy to install
- Ideal for indoor applications, thanks to the LSZH sheath
- Great mechanic resistance
- Totally dielectric

PRODUCT DETAILS

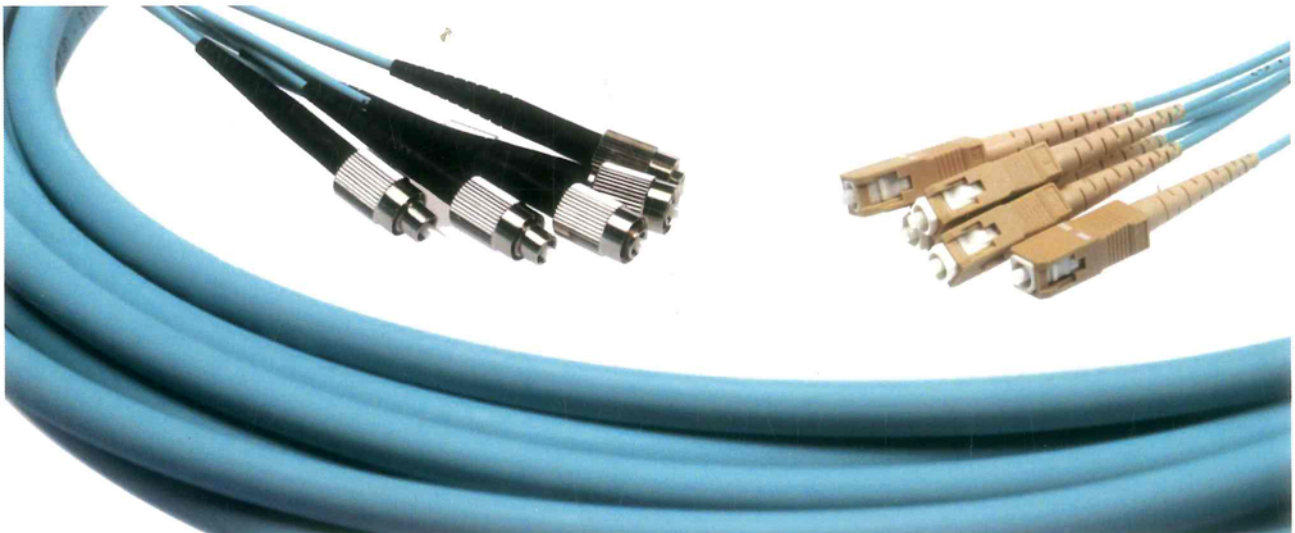


CABLE SECTION

1. LSZH outer sheath (RAL 6027)
2. Simplex cable LSZH sheath (RAL 6027)
3. Strengthening elements in aramid yarns
4. Central dielectric pulling element (FRP)
5. Tight buffered fiber

SPECIFICATIONS

CABLE		MULTIMODE OM3 AQUA BREAKOUT					
Applicable standards	CEI/EN 60 793 CEI/EN 60794-1						
MECHANICAL/TERMICHAL PERFORMANCE							
Pulling load resistance (N)	4-6 fo: 600 / 800	8 - 12 - 16 fo: 1.000 / 1.500 / 2000			18 - 24 fo: 2.000 / 2.500		
Crush resistance (N/cm)	From 200 to 250						
Static bending radius (mm)	10 times x outer diameter						
Dynamic bending radius (mm)	20 times x outer diameter						
Working temperature (°C)	-20 / +80						
Installing temperature (°C)	-10 / +60						
Storage temperature (°C)	-30 / +80						
MATERIALS							
Breakout outer sheath	LSZH (aqua RAL 6027)						
Simplex outer sheath	LSZH (aqua RAL 6027)						
Fiber buffer	Nylon - TIGHT						
Simplex strength member	Aramid yarns						
FIBER							
MM 50/125	OM3 (ITU-T G.651)						
CONSTRUCTION SPECIFICATIONS							
Number of fibers	4	6	8	12	16	18	24
Breakout outer diameter (mm)	7,5	9	10	12,7	13	13,2	15
Weight (kg/km)	50	75	100	125	135	150	200
Buffer diameter (µm)	850 ±50						
Simplex cable outer diameter (mm)	2 ±0,1						
Connectors	SC - LC - FC - ST - MU - E2000						



BREAKOUT ARMORED CABLE

CODE: CVB50B002M - Breakout Armored Cable 2 f.o.



BREAKOUT ARMORED CABLE

Protected by a steel wire braid, it holds inside two 2mm diameter optic patch cords. This cable is available pre-assembled with any type of connector

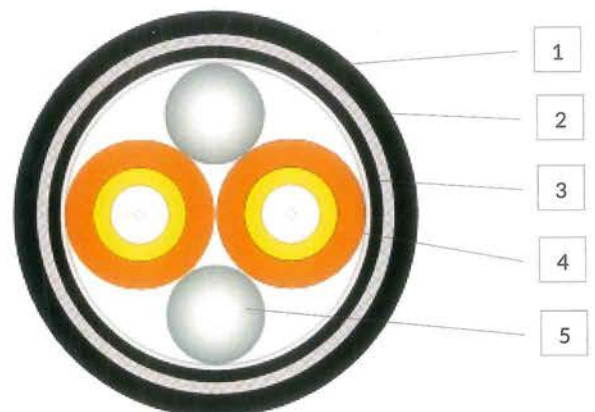
APPLICATIONS

- Devices connections for outdoor environments (LTE)

FEATURES

- Solid and easy to install
- Suitable for outdoor environments and resistant to UV rays
- Excellent tensile strength (pulling kit available)
- Anti-rodent protection (steel wire braid)
- Suitable also for indoor environments (LSZH sheath)

PRODUCT DETAILS



CABLE SECTION

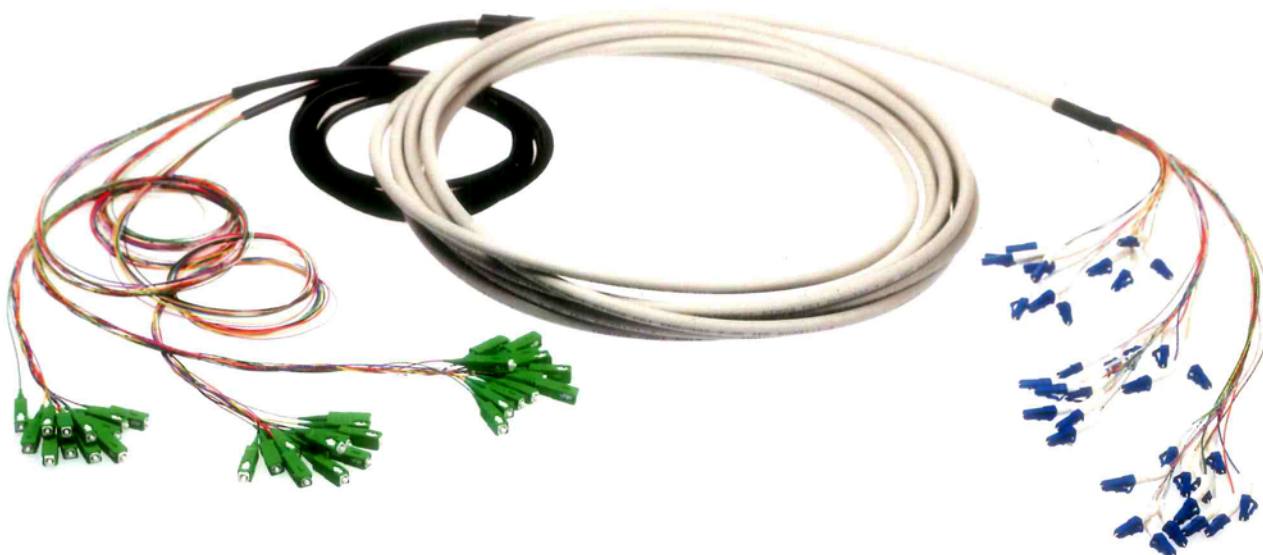
1. LSZH external cable sheath
2. Steel protection
3. LSZH internal sheath
4. Optic patch cords 2mm diameter, reinforced with aramid yarns and LSZH sheath
5. Strength member

TECHNICAL SPECIFICATIONS

CABLE TYPE	
Reference standards	IEC 60793-2-10
MECHANICAL/THERMAL PERFORMANCES	
Tensile strength (N)	1.000
Crush resistance (N/100mm)	2.000
Bending radius – permanent/temporary (mm)	86 / 129
Operating temperature (°C)	-30 / +70
Installation temperature (°C)	-5 / +50
Storing temperature (°C)	-30 / +70
MATERIALS/COLOR	
External and internal sheath	LSZH/Black RAL 9005
Optic patch cords sheath color	LSZH/Orange 2004, numbered
Armored protection between the cable jackets	Steel wire braid
Strength members	Aramid yarns
FIBER TYPE	
MM-50/125 OM2	G.651
STRUCTURAL PROPERTIES	
Number of fibers	2
Optic patch cords external diameter (mm)	2
Cable external diameter (mm)	8,6
Outer sheath thickness (mm)	1,0
Internal sheath diameter (mm)	5,6
Internal sheath thickness (mm)	0,7
Weight (kg/km)	100
Assemblable connectors type	SC - LC - FC - ST - MU - E2000



MINIBREAKOUT® INDOOR CABLE



MINIBREAKOUT® CABLE

Multi fiber cable composed by PICOBREAKOUT® cables (Ø 0,8mm reinforced by aramid yarns) under an overall LSZH outer sheath.

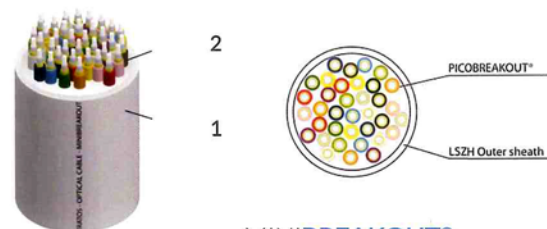
APPLICATIONS

- Internal optical links
- Data center infrastructure
- FTTH vertical cabling

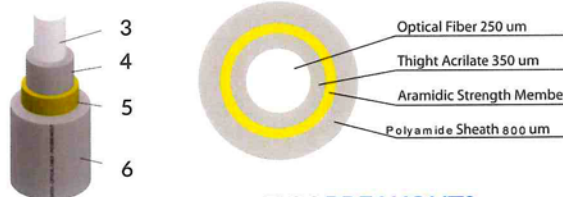
FEATURES

- 70% smaller than a breakout cable
- Excellent resistance (+20% than a breakout cable)
- Extremely flexible, compact and lightweight (3 times lower than a breakout cable)
- Fiber: G. 657 A2 (bend-insensitive). Compatible with G. 652D
- Ideal for indoor applications (LSZH sheath)
- Totally dielectric.

PRODUCT DETAILS



MINIBREAKOUT®

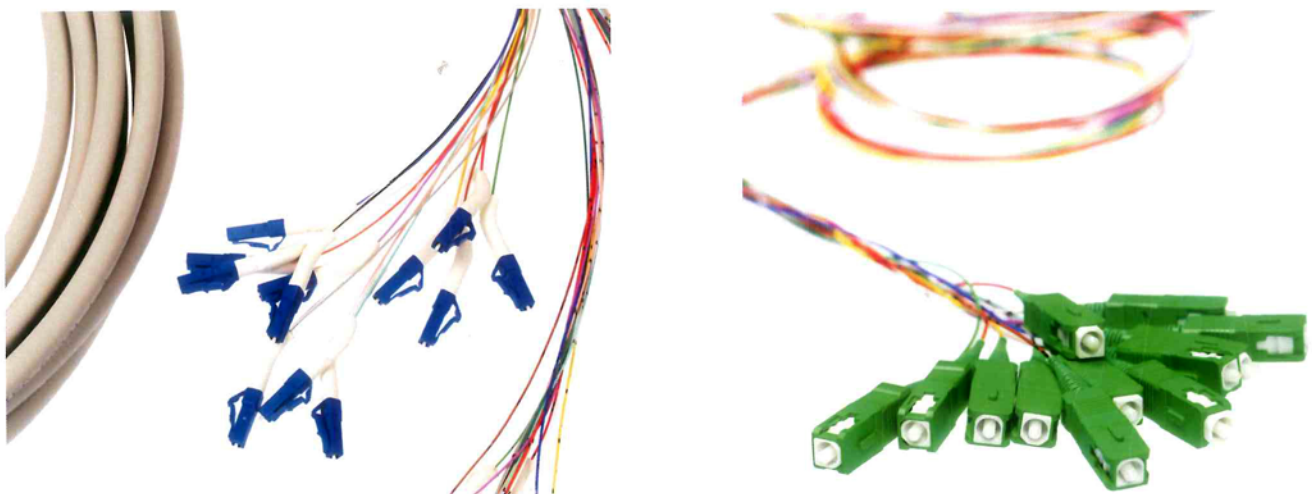


PICOBREAKOUT®

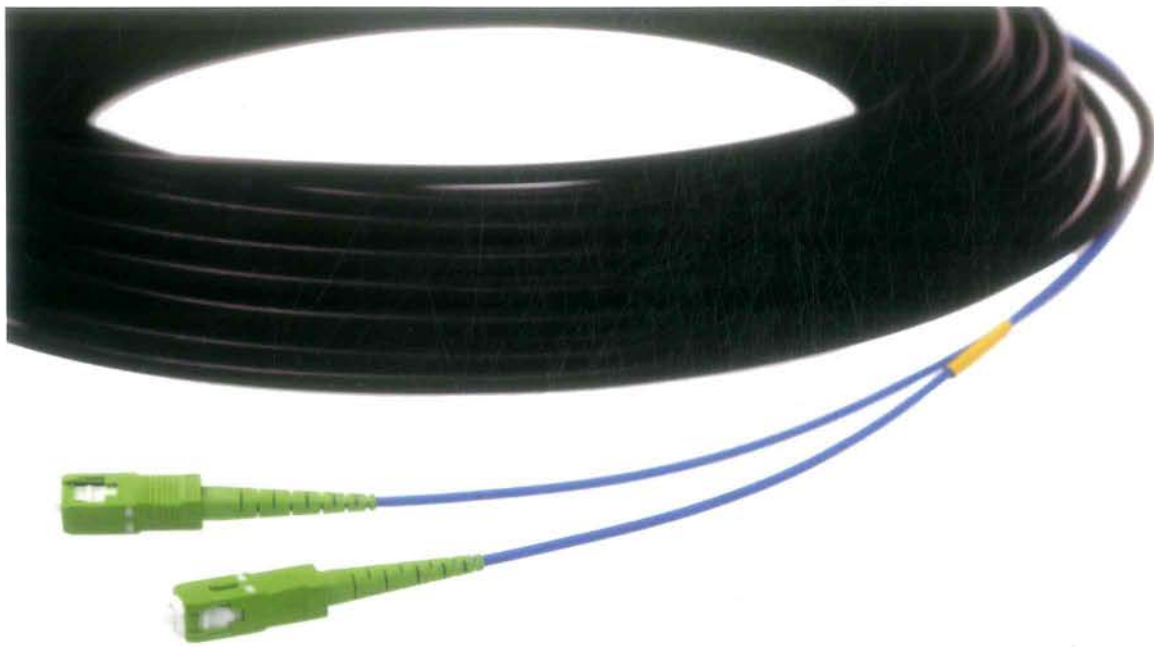
1. LSZH outer sheath
2. Picobreakout cable (0,8 mm)
3. Optical fiber
4. Tight acrylate
5. Kevlar
6. Polyamide sheath

SPECIFICATION

CABLE		MINIBREAKOUT® INDOOR				
Applicable standards	CEI/EN 60 793 CEI/EN 60794-1					
CONSTRUCTION PERFORMANCE		PICOBREAKOUT		MINIBREAKOUT		
Pulling load resistance (N)		300		500		
Crush resistance (N/10 cm)		2.000		2.500		
Minimum bending radius (mm)		20 times x outer diameter				
Temperature (°C) (IEC 60794-1-2-F5B)		-30 / +60 (attenuation ≤ 0,1 dB/Km a 1550 nm)				
Installing temperature (°C)		-40 / +70				
Storage temperature (°C)		-40 / +70				
MATERIALS		PICOBREAKOUT		MINIBREAKOUT		
Outer sheath		Polyamide		LSZH (ivory RAL9002)		
Coating		Tight acrylate		N/A		
Strength member		Aramid yarns		N/A		
FIBER		G.657-A2 (other fibers by request)				
SM-R 9/125						
CONSTRUCTION FEATURES						
Picobreakout outer diameter (mm)		0,8				
Minibreakout outer diameter (mm)		4,0	6,0	7,0	8,0	9,5
Fibers (n°)		4	12	16	24	36
Cable outer diameter (mm)		4,0	6,0	6,0	8,0	9,5
Jacket thickness (mm)		1,0	1,0	1,0	1,0	1,0
Weight (kg/km)		20	50	50	75	85
Connectors		SC - LC - FC - ST - MU - E2000				



MINIBREAKOUT® 2 F.O. OUTDOOR CABLE



MINIBREAKOUT® CABLE 2 F.O.

Fiber optic cable composed by 2 PICOBREAKOUT® cables (Ø 0,8mm reinforced by aramid yarns) under an overall LSZH outer sheath.

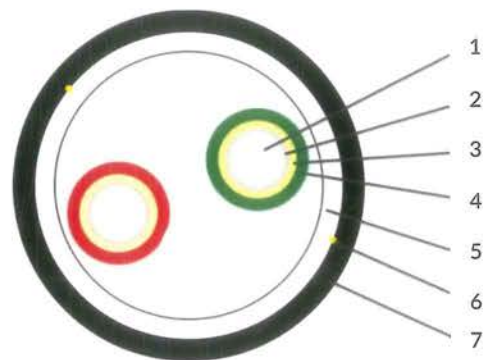
APPLICATIONS

- Outdoor links (FTTC)

FEATURES

- Strong and easy to install
- Ideal for indoor applications (LSZH sheath)
- Excellent resistance
- Totally dielectric
- Fiber: G. 657 A2 (bend-insensitive). Compatible with G. 652D
- Extremely flexible, compact and lightweight

PRODUCT DETAILS

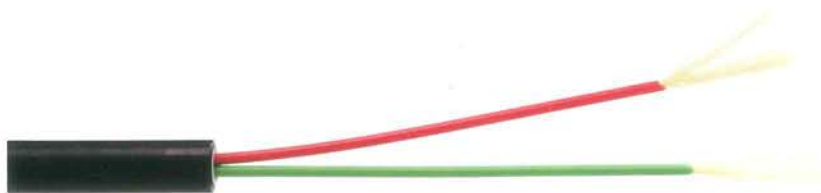


CABLE SECTION

1. Fiber optic
2. Tight acrylate
3. Aramid yarns
4. Polyamide sheath
5. LSZH inner sheath
6. Rip cord
7. HD PE outer sheath

SPECIFICATIONS

CABLE	MINIBREAKOUT [®] 2 F.O. OUTDOOR CABLE
Applicable standards	CEI/EN 60794 TELECOM-I ST 959
CONSTRUCTION PERFORMANCE	
Pulling load resistance (N)	400
Minimum bending radius (mm)	20 times x outer diameter
Temperature (°C) (IEC 60794-1-2-F5B)	-10 / +60 (attenuation ≤ 0,1 dB/Km reversible)
MATERIALS/COLORS	
Cable outer sheath	PE (black RAL 9005)
Cable inner sheath	LSZH
Picobreakout sheath	Polyamide (green / red)
Buffer	Tight acrylate
Strength member	Aramid yarns
FIBER	
SM-R 9/125	ITU-T G657 A2
CONSTRUCTION FEATURES	
Number of fibers	2
Cable outer diameter (mm)	4,0
Weight (kg/km)	15
Buffer diameter (mm)	0,350
Picobreakout diameter (mm)	0,82
Connectors	SC - LC - FC - ST - MU - E2000



MINICORE CABLE



MINICORE CABLE

Compact, flexible and lightweight: the minicore cable, available with 12 or 24 optical fibers, is the ideal solution for high density applications.

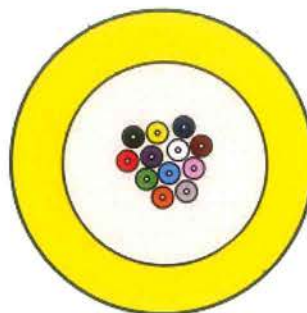
APPLICATIONS

- Data Center Infrastructures
- Telecommunication infrastructures

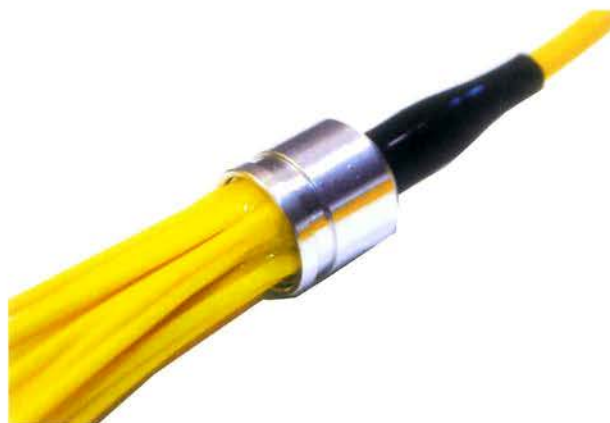
FEATURES

- Designed for high density applications
- Suitable for indoor/outdoor installations
- 250µm colored optical fibres
- Dielectric construction with strain relief in aramid yarns
- Flame retardant LSZH outer jacket
- Available with 12 or 24 optical fibers:
 - G.651 Multi mode OM4
 - G.652 Single mode

PRODUCT DETAILS

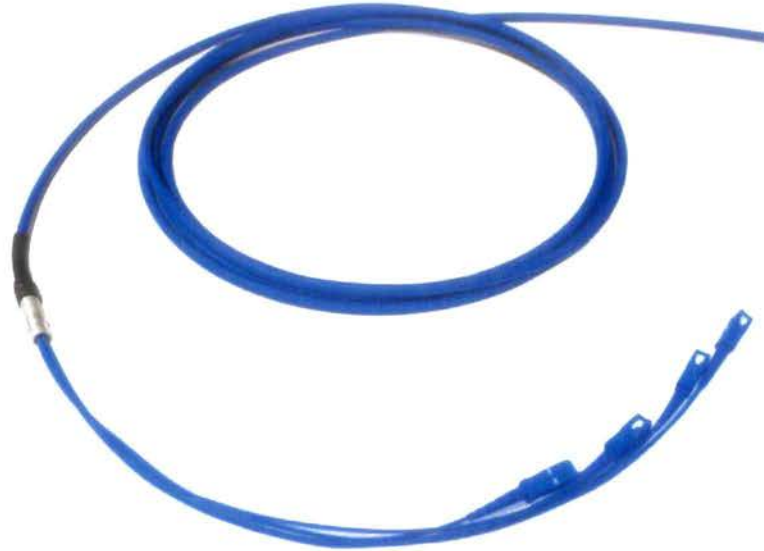


CABLE SECTION



COMPACT FAN OUT

FIBERNET PRE-TERMINATED CABLES WITH COMPACT FAN OUT



PRE-TERMINATED CABLES WITH COMPACT FAN OUT

Termination kit for loose cables, available in three different versions (4/12/24 f.o.), with strength member.

APPLICATIONS

- Loose cables for indoor/outdoor installations

FEATURES

- Smaller than usual, the 4 f.o. version has a diameter of only 11mm
- It reduces installation time
- Small and extremely flexible strength member, resistant to traction, crushing and shocks
- Entirely made of aluminium
- Customizable number of fibers

PRODUCT DETAILS



COMPACT FAN OUT
4 f.o.



STRENGTH MEMBER

SPECIFICATIONS PRE-TERMINATED CABLES WITH COMPACT FAN OUT

DESCRIPTION

The compact fan out is supplied with polyamide protection tubes, in order to guarantee an easy and safe cable deployment during the installation and an efficient protection of the connectors.

The tails length is scaled depending on the number of inserted fibers, in order to keep the strength member as much compact as possible.

The product is fully designed, assembled and certified by Fibernet.

TECHNICAL SPECIFICATIONS

PRE-TERMINATED CABLES WITH COMPACT FAN OUT

	NUMBER OF FIBERS		
	4 f.o.	12 f.o.	24 f.o.
Length (mm)	42,5	50	50
Diameter (mm)	11	15	18
Section (mm ²)	95	177	254
Weight (g)	20	40	50
Material	Aluminium	Aluminium	Aluminium
Tensile strength (N)	70	70	70

STRENGTH MEMBER

	NUMBER OF FIBERS		
	4 f.o.	12 f.o.	24 f.o.
Diameter (mm)	18,5	28,5	34,5
Section (mm ²)	269	638	935
Weight (g)	215	580	800
Material	Polyamide	Polyamide	Polyamide
Tensile strength (N)	250	250	250



DOUBLE COATING MINICORE CABLE



DOUBLE COATING MINICORE CABLE

This multifiber optical cable has a \varnothing 4.5 mm outer sheath and a \varnothing 3.0 mm inner jacket, and a double layer of strength member in aramid yarns.

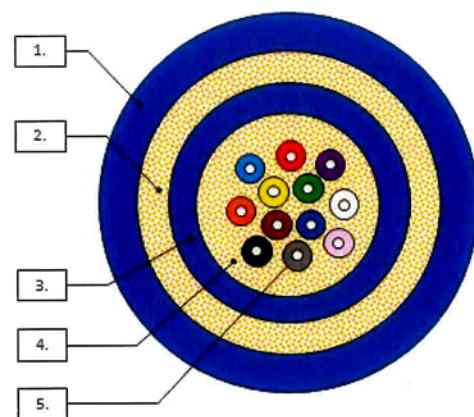
APPLICATIONS

- Data center infrastructures
- Telecommunication infrastructures

FEATURES

- High crushing resistance: 5 times stronger than a standard minicore cable
- Designed for high density applications
- 250 μ m colored optical fibres
- Dielectric construction with double strain relief in aramid yarns
- Flame retardant LSZH outer jacket
- Available with 12 optical fibers:
G.652, G.657, G.655 Single mode
OM1, OM2, OM3, OM4 Multi mode

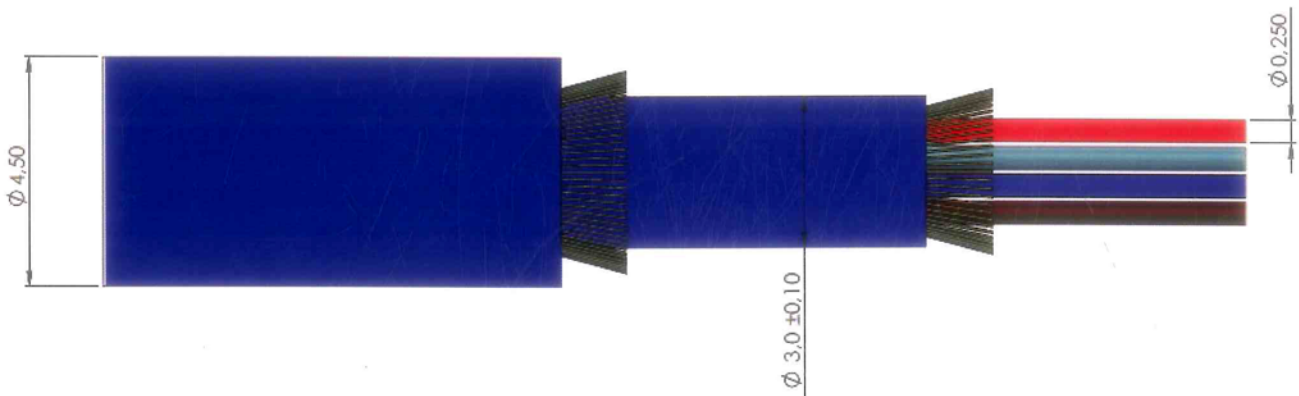
PRODUCT DETAILS



CABLE SECTION

1. Outer sheath \varnothing 4.5 mm flame retardant LSZH
2. Strength member in aramid yarns
3. Inner cable jacket \varnothing 3.0 mm flame retardant LSZH
4. Strength member in aramid yarns
5. Optical fiber SM or MM, \varnothing 250 μ m

DOUBLE COATING MINICORE CABLE



TECHINCAL SPECIFICATIONS

CABLE	DOUBLE COATING MINICORE CABLE	
Applicable Standards	CEI/EN 60793-1 – CEI/EN 60794-1 – CEI/EN 60332-3 – CEI/EN 60332-1 REACH - RoHS	
CONSTRUCTION FEATURES		
Number of fibers	12	
Outer jacket diameter (mm)	4.5 ± 0.2	
Outer jacket thickness (mm)	0.5 ± 0.05	
Inner jacket diameter (mm)	3.0 ± 0.1	
Inner jacket thickness (mm)	0.45 ± 0.05	
Strain relief	Aramid yarns	
Inner/Outer Jacket	Flame retardant LSZH	
Inner/Outer Jacket color	SM: Blue, Gray, Green	MM: Orange, Gray
Range of fiber types	SM: G.652, G.657, G.655	MM: OM1, OM2, OM3, OM4
250µm primary fibers coating	Color coded	
Coating	Acrylate	
MECHANICAL AND INSTALLATION CHARACTERISTICS		
Operation Temperature	-10° C ÷ +70° C	
Installation Temperature	-5° C ÷ +50° C	
Storage Temperature	-10° C ÷ +70° C	
Temporary/permanent minimum bending radius (mm)	20xD / 10xD	
Temporary/permanent pulling resistance (N)	1000 / 500	
Temporary/permanent crushing resistance (N/100mm)	1000 / 500	
Cable weight (kg/km)	20	



FIBERAPP

Production plant
ROMANIA



FIBERAPP SRL

Bul Closca Nr 94 Satu Mare

TEL.:

+40-361-412-398

+40-748-973-487